

# How the Town Council raises and spends money



The precept is the main source of income town and parish councils receive and this is just 7% of the total Council tax bill paid by residents. The precept is used to deliver, maintain and enhance the services below along with the day to day running of Witney Town Council.

For more information on the precept, visit [www.witney-tc.gov.uk](http://www.witney-tc.gov.uk)

Bank Interest/Charges -£3.29  
 Corporate Management £19.27  
 Democratic Representation & Management £15.60  
 Net Use of Reserves -£1.86

## Democracy and Governance

## Sports and Recreation

Windrush Place and Raleigh Crescent £8.74\*  
 The Leys (sports pitches & splash park) £14.72  
 Burwell QEII Recreation Ground £4.40  
 West Witney Sports Ground £6.59  
 King George V Recreation Ground £2.62  
 Witney Lake and Country Park £11.62  
 \*For planned Pitches 25/26

## Public Halls

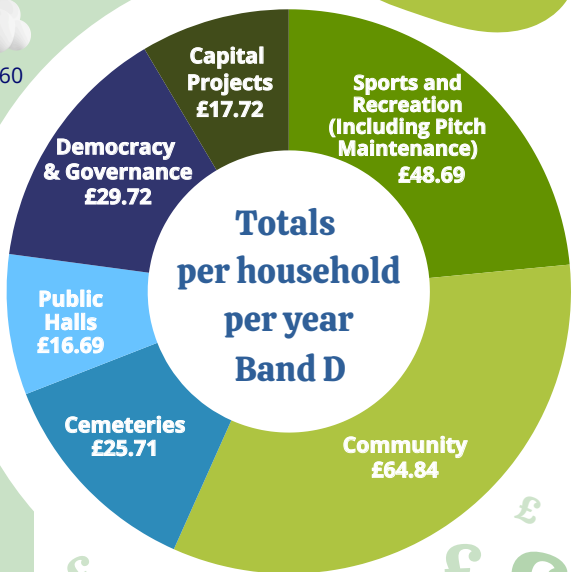
Burwell Hall £5.94  
 Corn Exchange £11.54  
 Income from Leased Community Halls -£0.79

## Capital Projects

Capital Projects £259.24  
 Grants and loans received -£159.98  
 Project Reserves -£81.54

## Community

Children & Youth Provision £4.46  
 Community Bus Services £2.08  
 Other Community Activities including Grants, Events, and Newsletters £16.50  
 Allotments, Grass Cutting, Open Spaces, Street Furniture £27.28  
 Play Areas/Equipment £4.96  
 Civic Activities inc. Remembrance Sunday & events £5.27  
 Christmas Lights £4.29



How much does it all cost?

## Cemeteries

Tower Hill Cemetery £13.00  
 Windrush Cemetery £11.56  
 Closed Churchyards £1.15

## 12 Play Areas

Average Band D home contributes **£203.37** per annum | **£16.95** per month